

MOMONZAWA



A 10-minute walk from Suruga Tokuyama Station. Located in the middle of Kawane Honmachi. Because the price is reasonable, it is recommended for those who want to enjoy their trips at a reduced cost. The kitchen is free to use, so you can prepare your own meals. Peach blossoms are in full bloom from late April to early May!



There are cherry blossom trees nearby. Please stay and come to see.



Lodging Cost

A room without meals: From 3,000 JPY

Message

It is a convenient location to go for sightseeing such as the Dream Suspension Bridge and Okui Lake Station. Please feel free to come. In spring, you can enjoy Tokuyama's famous peach blossoms and cherry blossoms. This is a town with seasonal appeal, so please come back many times.

Payment Method

Cash Only

Location/Website

1780-2, Tokuyama, Kawane-honcho, Haibara Gun, Shizuoka
TEL 090-1826-1323
HP <http://www.shizuoka-escape.com/stay/pg172.html>

Access

- ◎ 10-min walk from Oigawa Railway's Tokuyama Station
- ◎ 40-min drive from Shimada-Kanaya IC on Shin-tomei Expressway
- ◎ Parking space available

YURUYADO Voketto



A guest house that has been renovated from a 140-year-old private house, and a 1-minute walk from Aobe Station and access to Oigawa Railway.



You can choose between dormitories and private rooms. Opens the bar at night. How about having fun in Kawane Honmachi at an inn that is also used as a resting place for people in Aobe?



Lodging Cost

- ◆ OVERNIGHT STAY WITH BREAKFAST from 4,500 JPY
- ◆ dormitories from 4,500 JPY
- ◆ Private room from 5,000 JPY

Payment Method

Credit Card or Cash

Location/Website

703, Aobe, Kawane-honcho, Haibara Gun, Shizuoka
TEL 090-3800-3608
HP <http://www.shizuoka-escape.com/stay/voketto.html>

Activity Menu

EXPERIENCES 500 JPY each (It depends on the season.)
◆ Tea picking
◆ Plum wine making
◆ Picking wild vegetables

Message

It is a perfect place to spend such a luxurious time. There are also cafe and bar. Local people also come to use it, so you can enjoy interacting with them. Please spend your time. We look forward to your visit.

Access

- ◎ 1-min walk from Oigawa Railway Aobe Station
- ◎ 50-min drive from Shimada-Kanaya IC on Shin-tomei Expressway
- ◎ Parking space available (up to 10)
- ◎ Pick-up from the Aobe station

GUEST HOUSE NATURALITEA 椿邸



There is an over-100-year old traditional Japanese farmhouse situated beside the local shrine that we have recently renovated as a guest house. During your stay you will have access to all the attractions our community has to offer. You can go on a tour of the tea fields or harvest seasonal fruits and vegetables; you can make bowls and plates at the local pottery center; in the evening, you can even learn traditional Japanese cooking from local chefs! Our goal is to instill visitors with a love for our wonderful community, and a desire to come back again and again!



Lodging Cost

The price for the first night is 30000JPY for up to two people, with another 1000JPY for each additional person. Subsequent nights are 25000JPY.

Payment Method

Credit Card or Cash

Location/Website

1417 Takizawa Fujieda-shi, Shizuoka 426-0134, Japan.
TEL 054-639-0033
HP <https://naturalitea.com/pages/guest-house>

Activity Menu

- ◆ Tea plantation tour/Tea leaf picking experience
- ◆ Seasonal fruit & vegetable harvest experience
- ◆ Pottery experience
- ◆ Japanese food cooking class
- ◆ Rental bikes

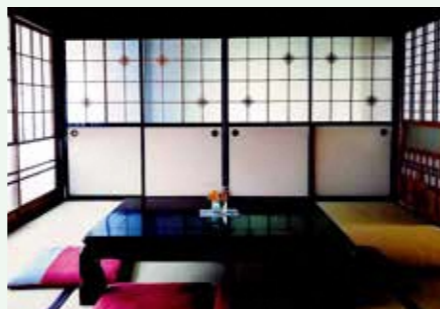
Access

- ◎ 30-min drive from Fujieda Station
- ◎ 20-min drive from Fujieda-Okabe IC on Shin-tomei Expressway
- ◎ Parking space available
- ◎ Pick-up/Drop-off service available

K u m a n o y a



Kumanoya is a self-catered accommodation limited to one group of up to 15 people per day. The entire home is reserved for you and your party so that you will not have to concern yourself with disturbances from other guests. Enjoy your freedom and leisure time on your own with the food you enjoy. The Japanese room is a spacious 56m² when the fusuma sliding doors are open. The bathroom and toilet have been renovated to provide all modern conveniences in order to offer you the utmost satisfaction while experiencing the history and comfort of the house.



Lodging Cost

17,000+ JPY to reserve the entire house (Accommodation fee, bedding fee, cleaning fee included)

Payment Method

Credit Card or Wire Transfer (in advance)

Location/Website

127-1, Takakuma, Shimada-shi, Shizuoka
TEL 080-5231-8644
(Contact hours: 9:00a.m. - 5:00p.m.)
HP (Please read the QR code)

Neighboring Sightseeing Locations

- ◆ Steam locomotives (The Thomas runs between June and December)
- ◆ Mount Hako (10-min walk to the starting point of the hike from the house)
- ◆ BBQ (Equipment available for rent)
- ◆ Granny Sayo's Place (Cozy restaurant operated by the grandmotherly proprietor, Sayo) (You can enjoy lunch in the open under a clear sky. Only open on weekends.)

Access

- ◎ 15-min walk from Oigawa Railway's Fukuyo Station
- ◎ 15-min drive from Shimada-Kanaya IC on Shin-tomei Expressway



Small Inns near the Oigawa River Basin

めぐまれしまち 中部

There are small inns that evoke a nostalgic sense of "home" scattered throughout the Oigawa River basin. Escape the bustle of the city and enjoy activities like paragliding or kayaking, or enjoy a relaxing moment in a hot spring. You can even choose to relax by doing nothing at all. These experiences and more, including a special moment just for you, can be found here.

The Oigawa River flows from north to south through the center of Shizuoka. Its basin is rich with natural beauty such as riparian areas and a number of other natural environments including the Minami Alps National Park and several deep and magnificent canyons.

Lush Natural Environments and Picturesque Scenery

The Oigawa River basin does not just offer the abundant natural scenes of the Minami Alps, but is also famous for the steam locomotives and Abt system trains (Japan's only cog railway) of the Oigawa Railway running along the river, creating a beautiful harmony between progress and nature. The 90-meter-long "Yume no Tsuribashi" (Dream Suspension Bridge) that spans the emerald blue lake on the Sumatakyo in Kawanehoncho is a popular spot that is said to be a must see once in your life. To top it all off, you can enjoy the beautiful scenery from the many large and small suspension bridges spanning the Oigawa River and view in awe the starlit sky which has been ranked 2nd in the "Clearest Starlit Skies of Japan" list.



Luxuriate in Nature and the Outdoors and Enjoy the Many Hot Springs

With the meandering Oigawa River, also called Uyama no Nanamagari below and views of the Minami Alps and Mount Fuji around you, paragliding is a great way to enjoy mother nature. You can also experience other outdoor sports such as kayaking in Sesso Lake, which was once a canoeing venue for the National Sports Festival. After a day of fun outdoor sports, there are abundant of hot springs where you can relax your body and recuperate, such as Kawane Hot Spring and Sumatakyo Hot Spring that offer the nostalgic feel of traditional hot spring resort towns.



Publication/Shizuoka Chubu Regional Division

Fujieda Office 2F, 362-1, Setoaraya, Fujieda-shi, Shizuoka, 426-0075
Tel: 054-644-9168 Fax: 054-645-1152 E-mail: chubu-chiiki@pref.shizuoka.lg.jp

T O M O S H I B I



A place where you can fully experience the tranquility of nature, surrounded by leafy trees and with the Oigawa River running past the door.

Enjoy the agricultural lifestyle alongside rice and barley farmers, or pursue active and creative endeavours by the river.

Home-cooked meals, using local ingredients, and barbecues are available when booked in advance. The cafe next to the lodge serves cakes and homemade pizzas.



Lodging Cost

OVERNIGHT STAY WITH TWO MEALS from 8,500 JPY

Payment Method

Credit Card or Cash

Location/Website

9 Jina, Kawane-honcho, Haibara Gun, Shizuoka
TEL 0547-56-2131
(or 090-2137-2551)
HP http://www.shizuoka-escape.com/stay/sango_counrty_tomoshibi.html

Activity Menu

- ◆Agricultural experience (green tea leaf picking / rice reaping - 500 JPY)
- ◆Canoeing (1,000 - 2,000 JPY)
- ◆Dried flowers / cake baking (from 1,500 JPY)
- ◆Making ball from springs of Japanese cedar (from 6,000 JPY)

Access

- 15-min walk from Oigawa Railway's Jina Station
- 30-min drive from Shimada-Kanaya IC on Shin-tomei Expressway
- Parking space available (up to 15 cars)

TENKU NO YADO



Located 400 meters above sea level with stunning views. Enjoy the mountains, the river and the stars.

Clean air, a view across green tea fields and starlit skies. The hosts run a forestry and mainly green tea business.

All meals are cooked from scratch, using homemade and local ingredients.

Go vegetable or fruit picking, create local foods such as soba noodles in our cooking classes, or go for a hike in the mountains. We also have table tennis and indoor games for rainy days.



Lodging Cost

OVERNIGHT STAY WITH TWO MEALS from 8,500 JPY

Payment Method

Cash Only

Location/Website

1647 Kaminagao, Kawane-honcho, Haibara Gun, Shizuoka
TEL 0547-56-0736
(or 090-5860-1974)
HP http://www.shizuoka-escape.com/stay/tenku_no_yado.html

Activity Menu

- ALL 500 JPY each
- ◆Konyaku
- ◆Green tea leaves picking / Green tea reaping
- ◆Vegetable and fruit picking
- ◆Baking (sponge, Ohagi, Kashiwa mocha, tea mango)
- ◆Tororo soup (seasonal)

Access

- 10-min walk from Oigawa Railway's Shimo izumi Station
- 50-min drive from Shimada-Kanaya IC on Shin-tomei Expressway
- Parking space available (up to 6 cars)

AOBE NO SATO / CHA FU KA



This Japanese style brewery was converted into a truly magical place to stay in November 2017.

The wooden frames around its windows are decorated with stunning images of Mount Fuji.

It still retains many of its original brewery signs which you can admire whilst sitting by the fireplace with a relaxing cup of tea.

Here you can enjoy a truly wonderful agricultural experience. Choose from tea leaf and bamboo shoot picking, or try your hand at local crafts; making papier-mache ware or chopstick rests. Or why not create your own dining experience, making noodles mixed with Kawane-cha. Meals are provided by the onsite chef, who used to work in Tokyo, and they are exceptional.



Lodging Cost

- ◆OVERNIGHT STAY WITH TWO MEALS from 9,000 JPY
- ◆OVERNIGHT STAY WITH BREAKFAST from 6,500 JPY

Payment Method

Cash Only

Location/Website

254-1, Aobe, Kawane-honcho, Haibara Gun, Shizuoka
TEL 0547-59-2600
(Contact hours: 9:00a.m. - 6:00p.m.)
HP http://www.shizuoka-escape.com/stay/aobenosato_chafuka.html

Activity Menu

- ◆EXPERIENCES 500 JPY EACH (included in accommodation fee)
- ◆Noodle making - Green Tea Udon OR Yuzu Suito
- ◆Various workshops - creating lacquered papier-mache ware, chopstick rests or straps using Japanese textiles (one each per experience)
- ◆Seasonal vegetable picking

Access

- 5-min walk from Oigawa Railway Aobe Station
- 60-min drive from Shimada-Kanaya IC on Shin-tomei Expressway
- Parking space available (up to 5)

GENMAI SAISHOKU AÇAI



This inn provides 100% plant-based vegan menu. Friendly to the environment, to your body and mind.

Enjoy your stay in Kawane at this 280 year old house.

We extend a warm welcome to everyone, not just vegans or vegetarians, who appreciate our house and furniture from a bygone age.



Lodging Cost

- ◆Stay only Adults 5,000JPY
- Under 12 2,500JPY / Under 3 1,200JPY (prices differ depending on the season)

Payment Method

Credit Card or Cash

Location/Website

276-1, Kuwanoyama, Kawane-honcho, Haibara Gun, Shizuoka
TEL 0547-59-2308
HP <http://www.shizuoka-escape.com/stay/acai.html>

Message

All our food is plant based and cooked with love and care. Genmai Saishoku is environmentally friendly and 100% vegan. We aim for a peaceful future which is in harmony with nature. Relax and escape with a visit to our inn.

Access

- 6-min walk from Oigawa Railway's Sawama Station
- 60-min drive from Shimada-Kanaya IC on Shin-tomei Expressway
- Parking space available

ASHITABA NO YADO



The owners are farmers who grow green tea, blueberries and vegetables.

Enjoy freshly cooked meals made from local ingredients, served in generous portions.

Receive the warmest of welcomes and be treated like one of the family.

Take part in vegetable picking, textile material dyeing or jam making, depending on the season of your visit.

Relax, sit back and chat with the friendly grandma about the region and rural life in Japan.



Lodging Cost

OVERNIGHT STAY WITH TWO MEALS from 8,500 JPY

Payment Method

Cash Only

Location/Website

1839, Tokuyama, Kawane-honcho, Haibara Gun, Shizuoka
TEL 0547-57-2557
(or 090-5806-6479)
HP http://www.shizuoka-escape.com/stay/ashitabano_yado.html

Activity Menu

- EXPERIENCES 500 JPY EACH
- ◆Towel dyeing with Gardenia what is this?
- ◆Yuzu jam making
- ◆Vegetable picking (Depending on the season)

Access

- 10-min walk from Oigawa Railway's Tokuyama Station
- 30-min drive from Shimada-Kanaya IC on Shin-tomei Expressway
- Parking space available (up to 8)

INISHIE NO KAZE



This 90-year old house was converted into a lodging place in November 2017.

One of its main features is a stunning ceiling lamp that not only lights up the room but will also lighten your heart. It's very picturesque, too.

Sit down by our glorious fireplace and dine on sumptuous local food prepared with the freshest of ingredients. A popular experience for our guests is preparing your own grated yam. During the summer months you can also enjoy an outdoor barbecue.

Watch steam locomotives from Oigawa Railway's Jina Station as they pass by the door.



Lodging Cost

OVERNIGHT STAY WITH TWO MEALS from 8,500 JPY

Payment Method

Cash Only

Location/Website

328, Jina, Kawane-honcho, Haibara Gun, Shizuoka
TEL 080-5199-3804
(Contact hours: 9:00a.m. - 7:00p.m.)
HP http://www.shizuoka-escape.com/stay/inishieno_kaze.html

Activity Menu

- EXPERIENCES 500 JPY EACH
- ◆Plum picking and syrup making
- ◆Blueberry picking
- ◆jam making
- ◆Chestnut pickin

Access

- 5-min walk from Oigawa Railway's Jina Station
- 40-min drive from Shimada-Kanaya IC on Shin-tomei Expressway
- Parking space available (up to 2 cars)
- Pick-up/Drop-off service available

H A N A N E K O



Visit this hotel in spring, and you will be greeted by lots of flowers, and the owners, a couple who moved from Nagano.

The home-cooked meal with fresh chemical-free vegetables of the season is a must! It's all the more delicious if harvested by you yourself!

Let's have fun time, chatting with the friendly owners and three cats.



Lodging Cost

OVERNIGHT STAY WITH TWO MEALS from 8,500 JPY

Payment Method

Cash Only

Location/Website

617, Shimonagao, Kawane-honcho, Haibara-gun, Shizuoka
TEL 080-4139-5908
(or 090-2137-2551)
HP <http://www.shizuoka-escape.com/stay/hananeko.html>

Activity Menu

- from 500JPY
- ◆Vegetable harvesting
- ◆Jam making
- ◆Konjac making
- ◆Smoking ...each from 500JPY
- *Depends on the season. Please ask for information.

Access

- 40-min walk from Oigawa Railway's Suruga Shimoizumi Station
- 30-min drive from Shimada-Kanaya IC on Shin-tomei Expressway
- Parking space available (up to 3 cars)

A ! S O B I A N



It is a 15-minute walk from Senzu Station. You can use this hotel for various purposes whether you are with your family or friends. You can enjoy BBQ and furnace cooking in the large garden. Take 60 steps, and you will reach Oi River! In summer, you can have fun in a river.

Make tea with tea powder. Try various things here, sleeping in a hammock in a forest, or joining a dustcloth race! And many more!



Lodging Cost

A room without meals: From 3,000 JPY

Payment Method

Cash Only

Location/Website

773, Higashifujikawa, Kawane-honcho, Haibara-gun, Shizuoka
TEL 090-2260-4475
(or 090-2137-2551)
HP <http://www.shizuoka-escape.com/stay/asobian.html>

Activity Menu

- Please ask about the charge for each activity .
- ◆Free English guide★
- ◆Matcha Tea party
- ◆Nagashi Somen (cool noodles flowing to you through a bamboo trough!)
- ◆Anywhere-Hammock
- ◆Pizza baking in a furnace
- ◆Building a bird nest ...and many more!

Access

- 15-min walk from Oigawa Railway's Senzu Station
- 50-min drive from Shimada-Kanaya IC on Shin-tomei Expressway
- Parking space available (up to 8 cars)